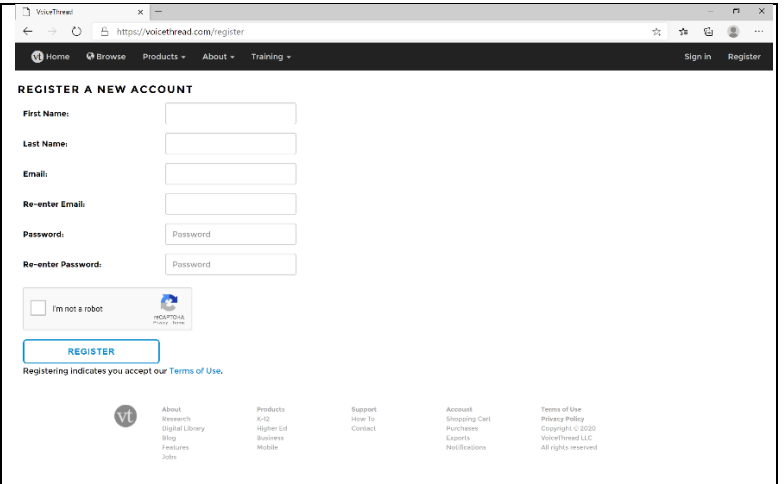


VIRTUAL WORKSHOP NOVEMBER 18-19, 2020

VOICE THREAD TUTORIAL

Step 1: Register your Voice Thread account at <https://www.voicethread.com/register> to comment and participate in the ePoster discussions

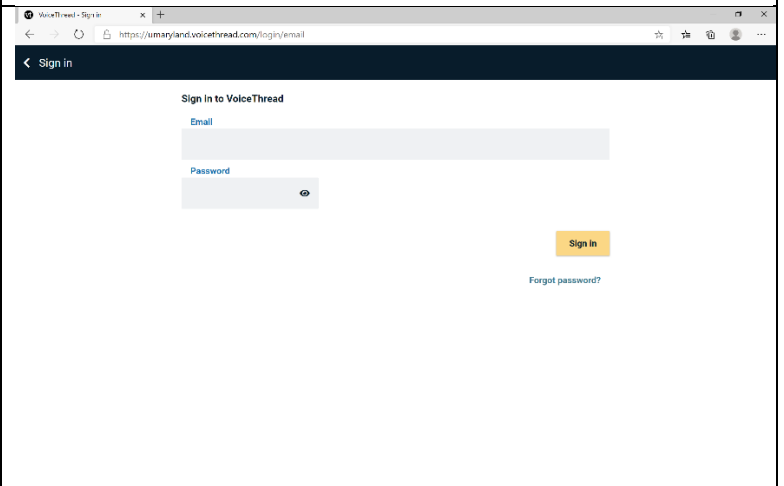


The screenshot shows the registration page on the VoiceThread website. The page title is "REGISTER A NEW ACCOUNT". It contains several input fields: "First Name", "Last Name", "Email", "Re-enter Email", "Password", and "Re-enter Password". There is a checkbox for "I'm not a robot" with a CAPTCHA icon. A blue "REGISTER" button is located below the fields. At the bottom, there is a link for "Terms of Use". The footer includes navigation links for "About", "Products", "Support", "Account", and "Terms of Use".

Step 2: To comment (audio or video) on the ePosters, login to the Voice Thread platform at:

<https://www.voicethread.com/login/email>

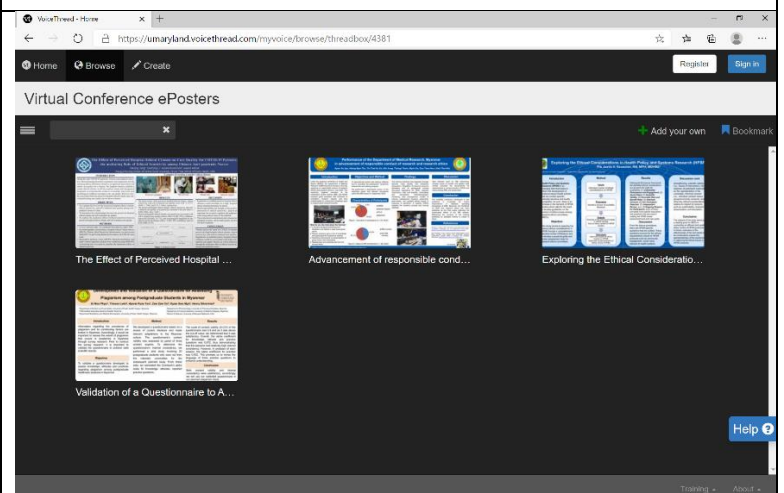
If you only want to view the ePosters, please continue to Step 3.



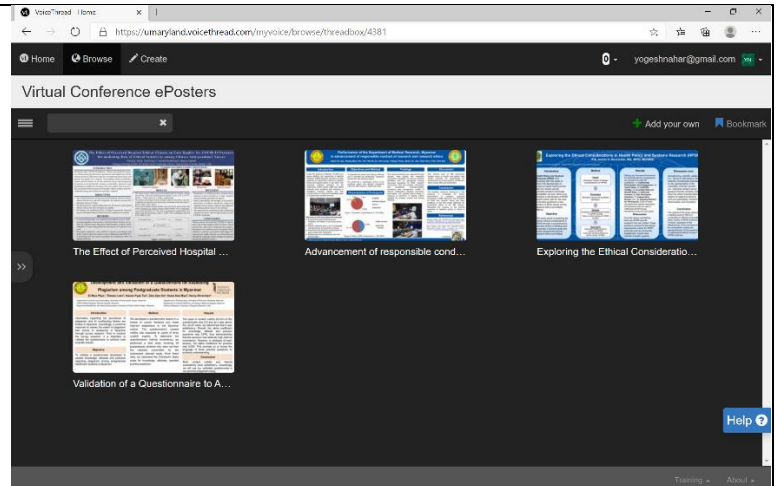
The screenshot shows the login page on the VoiceThread website. The page title is "Sign in". It contains two input fields: "Email" and "Password". There is a yellow "Sign in" button. A link for "Forgot password?" is located below the "Sign in" button. The page also has a "Sign in" link in the top left corner.

Step 3: Visit the ePosters Session threadbox at <https://umaryland.voicethread.com/myvoice/browse/threadbox/4381>

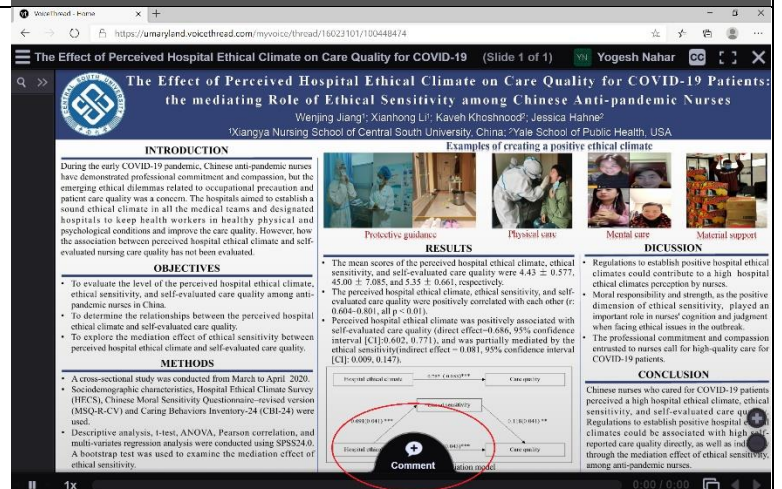
You can also find the above ePoster Session link on our website at <https://asia-researchethics.net>



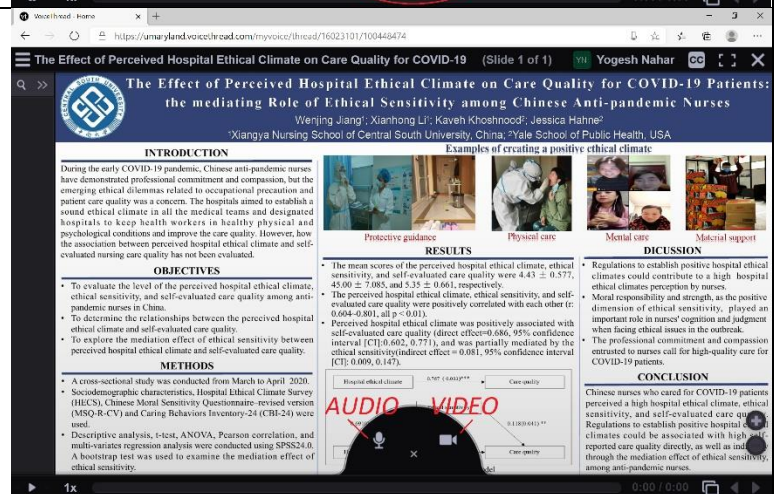
Step 4: On the main ePosters page, ensure you are logged in by checking your email address at the top-right of your screen. Then click on an ePoster.



Step 5: You will find the '+ Comment' box at the bottom in the middle of the screen on the ePoster page.



Step 6: Clicking on the comment box will provide you with an option to record an audio or video comment.



Step 7: You might be asked by your Internet browser to give permission to access your camera or microphone.

Allow access and finish your recording to upload your comment to the ePoster.

Perceived Hospital Ethical Climate on Care Quality for COVID-19 Patients: Role of Ethical Sensitivity among Chinese Anti-pandemic Nurses
Wenjing Jiang¹, Xianhong Li¹, Kavah Khoshrood², Jessica Hähne³
¹Xiangya Nursing School of Central South University, China; ²Yale School of Public Health, USA

INTRODUCTION
During the early COVID-19 pandemic, Chinese anti-pandemic nurses have demonstrated professional commitment and compassion, but the emerging ethical dilemmas related to occupational precaution and patient care quality was a concern. The hospitals aimed to establish a sound ethical climate in all the medical teams and designated hospitals to keep health workers in healthy physical and psychological conditions and improve the care quality. However, how the association between perceived hospital ethical climate and self-evaluated nursing care quality has not been evaluated.

OBJECTIVES

- To evaluate the level of the perceived hospital ethical climate, ethical sensitivity, and self-evaluated care quality among anti-pandemic nurses in China.
- To determine the relationships between the perceived hospital ethical climate and self-evaluated care quality.
- To explore the mediation effect of ethical sensitivity between perceived hospital ethical climate and self-evaluated care quality.

METHODS

- A cross-sectional study was conducted from March to April 2020.
- Sociodemographic characteristics, Hospital Ethical Climate Survey (HECS), Chinese Moral Sensitivity Questionnaire-revised version (MSQ-R-CV) and Caring Behaviors Inventory-24 (CBI-24) were used.
- Descriptive analysis, t-test, ANOVA, Pearson correlation, and multi-variate regression analysis were conducted using SPSS24.0. A bootstrap test was used to examine the mediation effect of ethical sensitivity.

RESULTS

- The mean scores of the perceived hospital ethical climate, ethical sensitivity, and self-evaluated care quality were 4.41 ± 0.577 , 45.00 ± 7.085 , and 5.25 ± 0.661 , respectively.
- The perceived hospital ethical climate, ethical sensitivity, and self-evaluated care quality were positively correlated with each other ($r: 0.604-0.801$, all $p < 0.001$).
- Perceived hospital ethical climate was positively associated with self-evaluated care quality (direct effect = 0.686, 95% confidence interval [CI]: 0.662, 0.771), and was partially mediated by the ethical sensitivity (indirect effect = 0.081, 95% confidence interval [CI]: 0.009, 0.145).

DISCUSSION

- Regulations to establish positive hospital ethical climates could contribute to a high hospital ethical climates perception by nurses.
- Moral responsibility and strength, as the positive dimension of ethical sensitivity, played an important role in nurses' cognition and judgment when facing ethical issues in the outbreak.
- The professional commitment and compassion entrusted to nurses call for high-quality care for COVID-19 patients.

CONCLUSION
Chinese nurses who cared for COVID-19 patients perceived a high hospital ethical climate, ethical sensitivity, and self-evaluated care quality. Regulations to establish positive hospital ethical climates could be associated with high self-reported care quality directly, as well as indirectly through the mediation effect of ethical sensitivity among anti-pandemic nurses.

Examples of creating a positive ethical climate

- Protective guidance
- Physical care
- Mental care
- Material support

Path Diagram:

```
graph LR; A[Perceived ethical climate] --> B[Ethical sensitivity]; A --> C[Care quality]; B --> C;
```